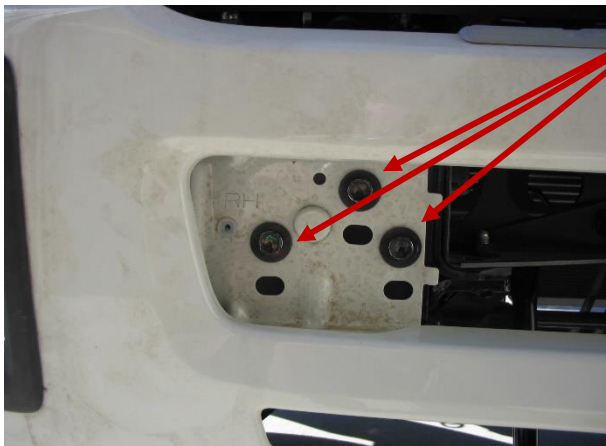


B3IS5465TSY Fitting Instruction

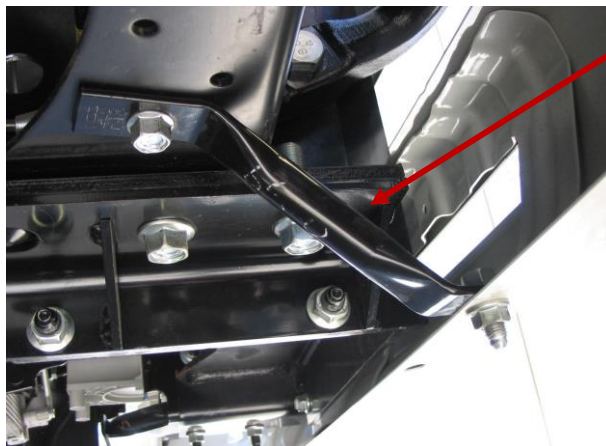
FTS FH 4x4 TP 2008 –



REMOVE BUMPER BAR
REMOVE PLASTIC COVER
DRIVERS SIDE SHOWN



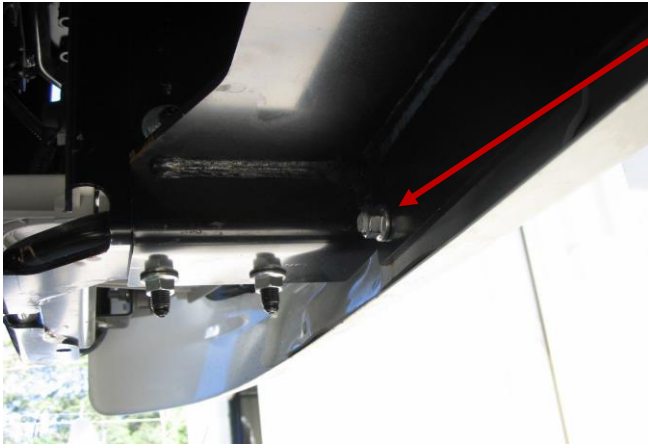
REMOVE BUMPER BOLTS, THREE (3) PER
SIDE
DISCARD BOLTS



REMOVE BUMPER STAYS, ONE (1) PER SIDE

B3IS5465TSY Fitting Instruction

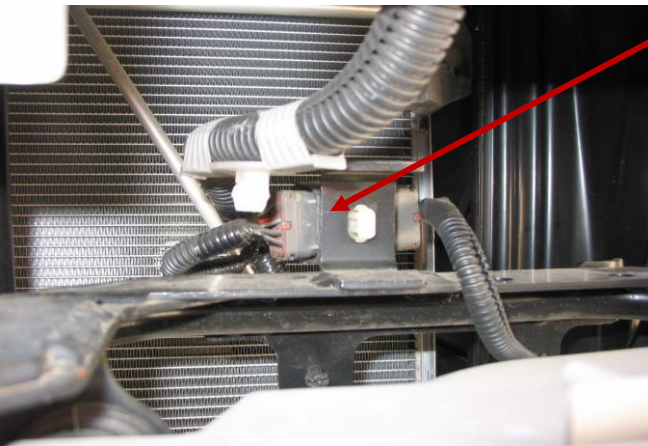
FTS FH 4x4 TP 2008 –



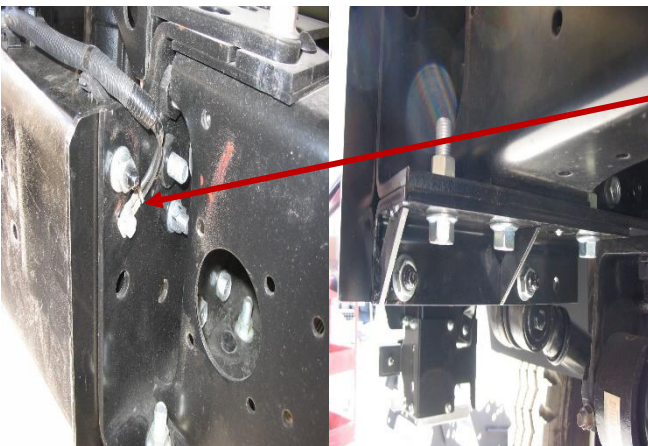
REMOVE NUT, ONE (1) PER SIDE
PASSENGER SIDE SHOWN



BUMPER REMOVED



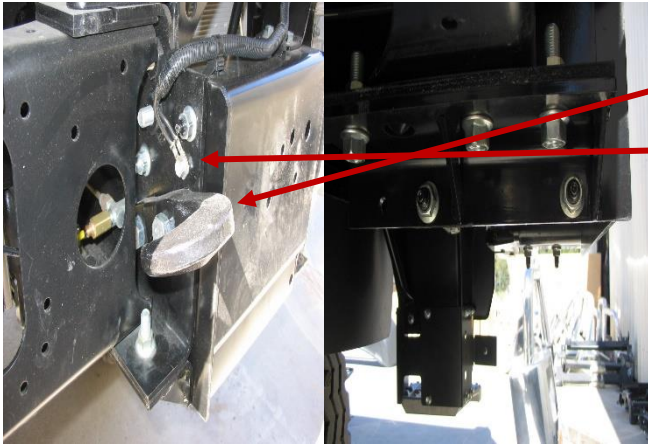
UNPLUG HEADLAMP WIRING FROM
CONNECTOR AND HEADLAMP MOUNTING
BRACKET



REMOVE HEADLAMP BRACKET
REMOVE EARTH WIRE
DRIVER SIDE SHOWN

B3IS5465TSY Fitting Instruction

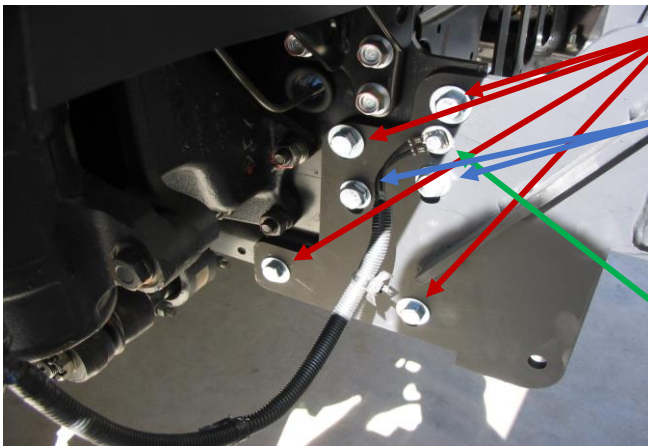
FTS FH 4x4 TP 2008 –



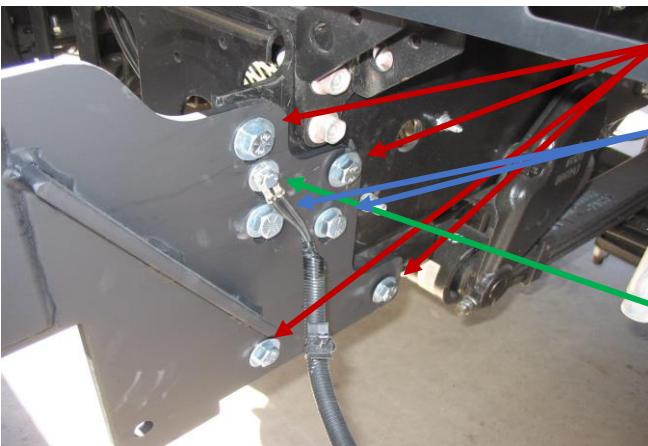
REMOVE HEADLAMP MOUNTING BRACKET
 REMOVE TOW HOOK
 REMOVE EARTH WIRE



HEADLAMP REMOVED
 PASSENGER SIDE SHOWN



INSTALL FOUR (4) 1 1/2" x 1/2" BOLTS,
 WASHERS (2 PER BOLT) AND NYLOC NUTS
 INSTALL TWO (2) 2" x 9/16" BOLTS, WASHERS
 (2 PER BOLT) AND NYLOC NUTS
 TIGHTEN BOLTS AND NUTS ENOUGH TO
 ALLOW FINAL ADJUSTMENT LATER
 REFIT EARTH WIRE USING ONE (1) M8 x
 25mm BOLT AND FLAT WASHER



INSTALL FOUR (4) 1 1/2" x 1/2" BOLTS,
 WASHERS (2 PER BOLT) AND NYLOC NUTS
 INSTALL TWO (2) 2" x 9/16" BOLTS, WASHERS
 (2 PER BOLT) AND NYLOC NUTS
 TIGHTEN BOLTS AND NUTS ENOUGH TO
 ALLOW FINAL ADJUSTMENT LATER
 REFIT EARTH WIRE USING ONE (1) M8 x
 25mm BOLT AND FLAT WASHER

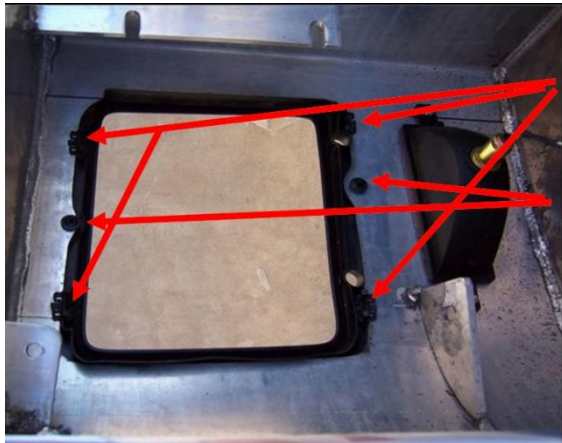
B3IS5465TSY Fitting Instruction

FTS FH 4x4 TP 2008 –



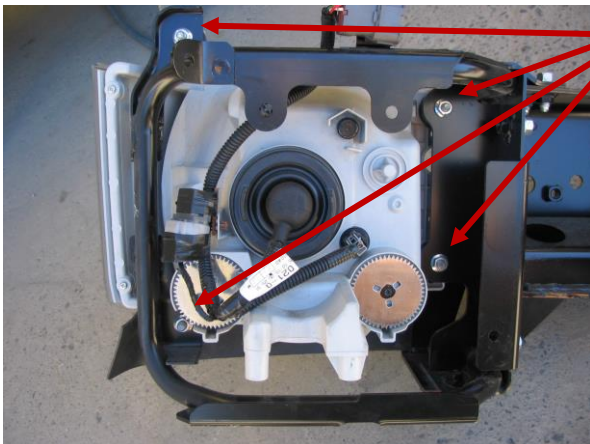
REMOVE HEADLAMP SURROUND FROM BUMPER BAR

FOUR CLIPS

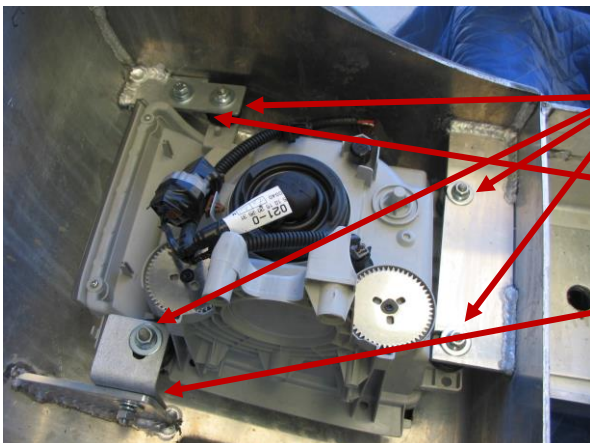


INSTALL HEADLAMP SURROUND INTO BULLBAR USING ORIGINAL FOUR (4) CLIPS

USE ROUND SPRING CLIPS AND PUSH INTO LOCATING PINS, TWO (2) PER HEADLAMP SURROUND



REMOVE HEADLAMP FROM BRACKET
RETAIN NUTS



INSTALL HEADLAMP INTO BULLBAR

USE ORIGINAL FOUR (4) NUTS AND $\frac{5}{16}$ " FLAT WASHER

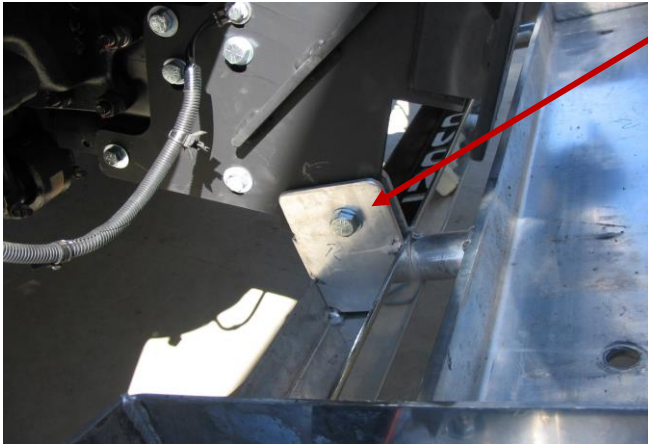
USE NEW FLAT BRACKET AND ONE (1) M8 x 25mm BOLT, TWO (2) FLAT WASHERS, ONE (1) SPRING WASHER AND NUT

USE NEW ANGLE BRACKET AND ONE (1) M8 x 25mm BOLT, TWO (2) FLAT WASHERS, ONE (1) SPRING WASHER AND NUT

PASSENGER SIDE SHOWN

B3IS5465TSY Fitting Instruction

FTS FH 4x4 TP 2008 –



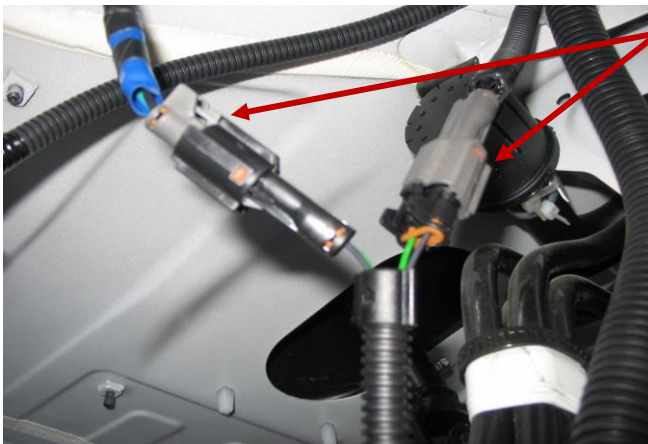
FIT BULLBAR ONTO MOUNT USING TWO (2) 2 X 5/8" BOLTS, WASHERS AND NYLOC NUT

TIGHTEN NUTS TO ENGAGE THREAD INTO NYLOC AS TO ALLOY BULLBAR PIVOT

DRIVER SIDE SHOWN



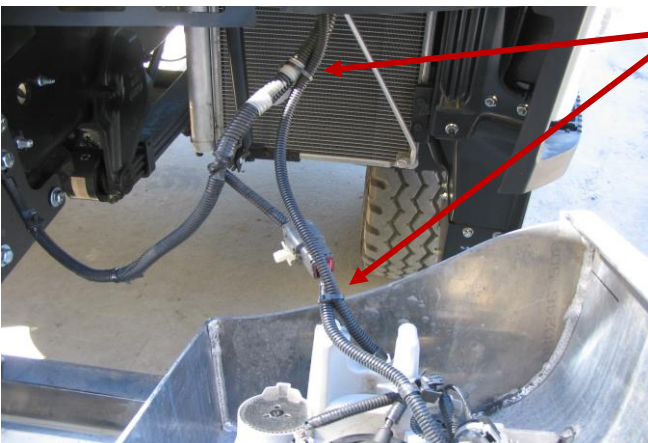
REFIT ORIGINAL TOW HOOK USING ORIGINAL BOLTS, WASHERS AND NUTS



UNPLUG BODY MOUNTED INDICATOR AND PLUG BULLBAR MOUNTED INDICATOR HARNESS AS SHOWN

PLUG IN THE OTHER HARNESS END INTO THE LAMP THAT IS FITTED IN THE BULLBAR

TO BULLBAR LAMP



CABLE TIE INDICATOR HARNESS TO HEADLAMP HARNESS

B3IS5465TSY Fitting Instruction

FTS FH 4x4 TP 2008 –



RAISE AND SECURE BULLBAR

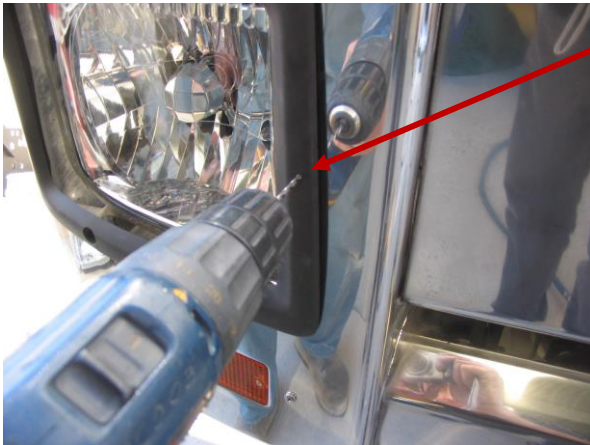
LOCK BULLBAR IN PLACE USING TWO EYEBOLTS SUPPLIED

ALIGN BULLBAR TO VEHICLE ENSURING BULLBAR GAPS ARE EQUAL

TORQUE ALL FASTENERS

(NOTE NON-TOWPIN BULLBAR SHOWN)

| LOCATION | SIZE | TORQUE |
|---------------|-------|--------|
| BULLBAR MOUNT | 1/2" | 80Nm |
| BULLBAR MOUNT | 9/16" | 140Nm |
| | | |

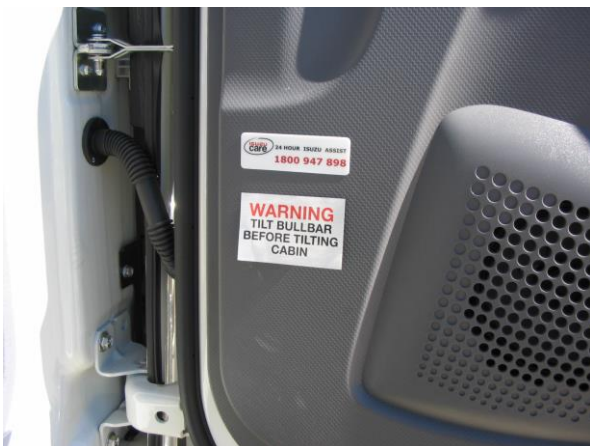


USE A 1/8" DRILL BIT TO DRILL A HOLE INTO THE BULLBAR

USING BLACK SELF-TAPPING SCREW, SCREW IT INTO THE BULLBAR TO RETAIN HEADLAMP SURROUND

ONE (1) PER HEADLAMP

DRIVER SIDE SHOWN



FIT TILT CAB WARNING LABEL TO DRIVERS SIDE DOOR AS SHOWN



FIT TILT CAB WARNING LABEL TO BACK OF CAB NEAR TILT LEVER

B3IS5465TSY Fitting Instruction

FTS FH 4x4 TP 2008 –



FITTING KIT

P/N B3IS5465TSY

| Qty | Length | Diameter | Thread Pitch | Description |
|---|------------------------------|----------|-----------------|------------------------|
| HEADLIGHT BOLT KIT | | | | |
| 4 | 25mm | 8mm | 1.25mm | Metric Bolt Grade 8H/T |
| 4 | | 8mm | 1.25mm | Metric ZP Nut |
| 16 | | 8mm | | Flat Washer |
| 4 | | 8mm | | Spring Washer |
| 4 | 3/4" | 6 Gauge | | Black Screw |
| 4 | | 6mm | | Shaft Clip |
| ADDITIONS | | | | |
| 2 | Flat Light Brackets | | | |
| 1 | Drivers Side Angle Bracket | | | |
| 1 | Passenger Side Angle Bracket | | | |
| SEALED IN HALF SIZE CLEAR BAG AND PLACED IN MOUNT BOLT KIT BAG | | | | |

| | | | | |
|--|--|-------|--------|------------------------|
| MOUNT BOLT KIT | | | | |
| 2 | 25mm | 8mm | 1.25mm | Metric Bolt Grade 8H/T |
| 2 | | 8mm | | Flat Washer |
| 8 | 2" | 1/2" | UNC | Bolt Grade 8H/T |
| 8 | | 1/2" | UNC | Nyloc Nut |
| 16 | | 1/2" | | Flat Washer |
| 4 | 2" | 9/16" | UNC | Bolt Grade 8H/T |
| 4 | | 9/16" | UNC | Nyloc Nut |
| 8 | | 9/16" | | Flat Washer |
| 1 | Fitting Instructions | | | |
| 2 | Tilt Bullbar Warning Stickers | | | |
| 2 | 200mm Cable Tie | | | |
| 1 | FTS Patch Harness | | | P/N ICHFTS-FSS |
| 1 | 240mm Towpin (incl Locking Pin and Nylon Washer) | | | P/N ICZBKTP240 |
| SEALED IN CLEAR BAG AND BOXED WITH TOWPIN | | | | |

| | | | | | |
|----------------------------|----------------------------------|------|-----|--------------------|----------------|
| ATTACHED TO BULLBAR | | | | | |
| 2 | | 3/4" | UNC | Eyebolt Grade 8H/T | P/N ICEYEBOLT |
| 2 | | 3/4" | | Flat Washer | |
| 2 | 2 1/2" | 5/8" | UNC | Bolt Grade 8H/T | |
| 2 | | 5/8" | UNC | Nyloc Nut | |
| 4 | | 5/8" | | Flat Washer | |
| ADDITIONS | | | | | |
| 2 | LED Indicator Lights (95200CUST) | | | | P/N ICLED33IND |
| 1 | Steel Bullbar Mount | | | | |

B3IS5465TSY Fitting Instruction

FTS FH 4x4 TP 2008 –



**B3IS5465TSY Fitting Instruction
 FTS FH 4x4 TP 2008 –**

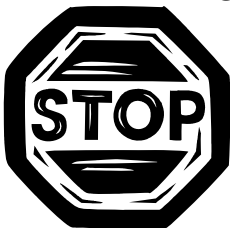


**DESPATCH CHECKLIST
 B3IS5465TSY
 ISUZU FTS FH 4x4 TP 2008-**

| | |
|----------------|--|
| Work Order No: | |
| Finish: | |
| Transport: | |
| Due Date: | |

| | | | |
|----|-------|---|---|
| BK | _____ | 2 | Flat Light Brackets – Included in Headlight Bolt Kit |
| BK | _____ | 1 | Drivers Side Angle Brackets – Included in Headlight Bolt Kit |
| BK | _____ | 1 | Passenger Side Angle Brackets – Included in Headlight Bolt Kit |
| BK | _____ | 1 | Headlight Bolt Kit – Included in Mount Bolt Kit |
| BK | _____ | 1 | Mount Bolt Kit – Boxed With Towpin |
| BK | _____ | 1 | 240mm Locking Towpin (incl Nylon Washer) |
| OC | _____ | 1 | Steel Mounting Bracket |
| OC | _____ | 2 | LED Indicator Lights (ICLED33IND-95200CUST) |
| OC | _____ | 2 | Overriders (3" CA01 Plastic) |
| OC | _____ | 2 | Custom Alloy Badges |
| WR | _____ | 2 | Eyebolts (³ / ₄ " UNC ZP) and Washers – Fitted To Bar |
| WR | _____ | 2 | 2½" x ⁹ / ₁₆ " UNC Bolt Grade 8H/T – Fitted To Bar |
| WR | _____ | 2 | ⁹ / ₁₆ " Nyloc Nut – Fitted To Bar |
| WR | _____ | 4 | ⁹ / ₁₆ " Flat Washer – Fitted To Bar |
| WR | _____ | 2 | LED Indicator Lights (ICLED33IND-95200CUST) – Fitted to Bar |
| WR | _____ | 1 | Bolt Kit Box – Taped to Bar |

**See other side of this page for photos of all mounts
 IS THIS PRODUCT "THE BEST IT CAN BE"?
 IF NO FIX BEFORE CONTINUING**



 Wrapper's Initials Checker's Initials

ALL PARTS CHECKED AND COMPLETED BY:

NUTS AND BOLTS: _____ DATE: ____/____/____

ORDER CONTROL: _____ DATE: ____/____/____

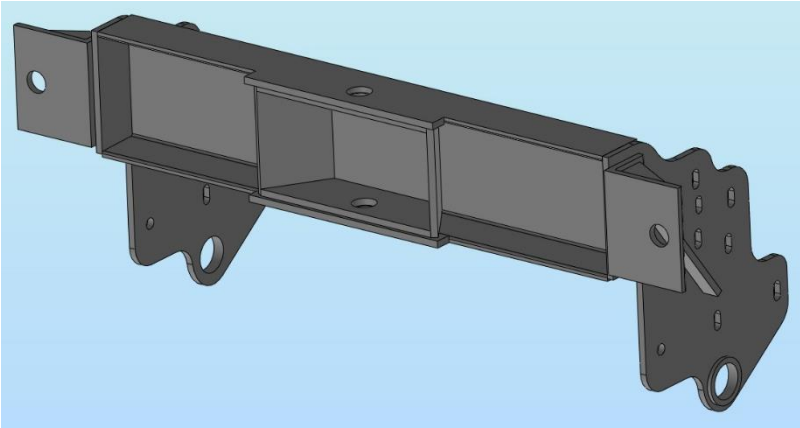
FINAL WRAP CHECK: _____ DATE: ____/____/____

B3IS5465TSY Fitting Instruction

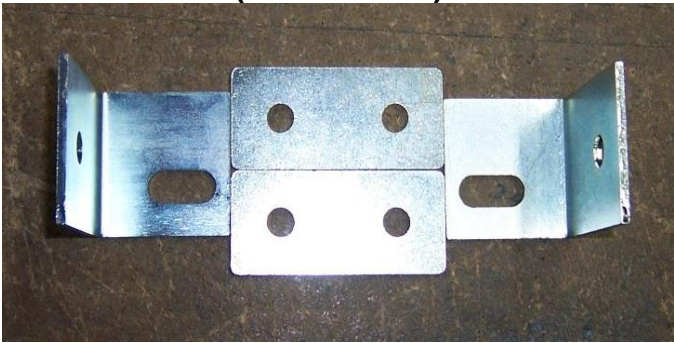
FTS FH 4x4 TP 2008 –



STEEL MOUNT



ANGLE AND FLAT LIGHT BRACKETS (IN BOLT KIT)



_____/_____
Wrapper's Checker's
Initials Initials